

Stock Clamshells with a Common Mold Base

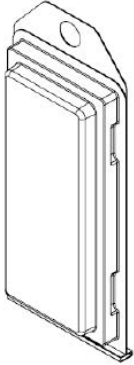
These images demonstrate clamshells with the same Overall Outside Dimensions, but with variations in the associated cavity and insert card dimensions.

Series 70

Overall Length = 5.063

Overall Width = 2.063

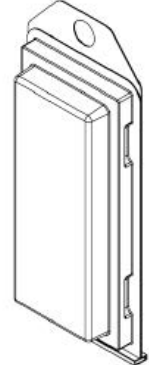
The stock clamshells on this page are made from Mold Base #70



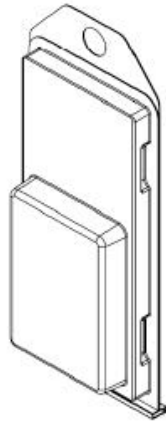
71TFM



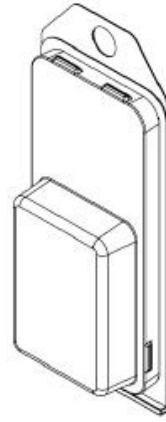
72TFM



75TFM



77TFM



78TFM